

Application Note

Document Number APL-00120

Updated 12/09/01 Rev-A



Printing a Screen shot on the NIC 10G & 2.5G

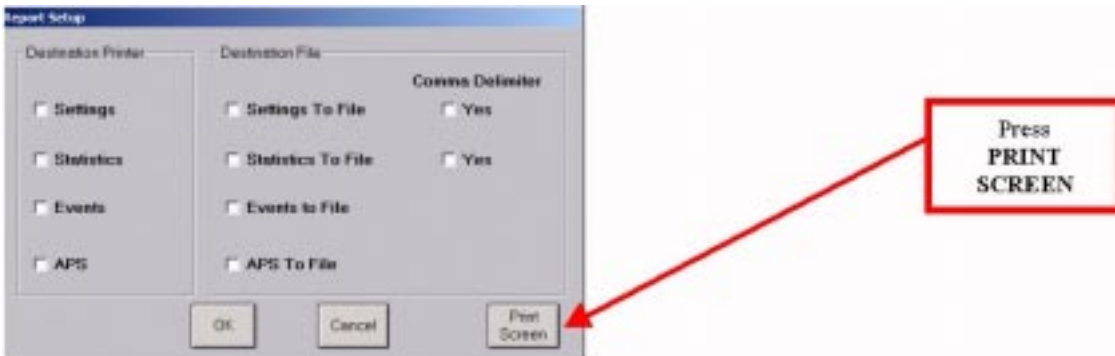
Purpose/Description

The Purpose of this procedure is to provide instructions for printing the screen using a PC. It is assumed the user has access to a PC and has a network connection to the NIC10G or 2.5G using Remote Control Software.

Step I. Locate the desired screen for which you want to print, then press the **Print Report** button, located at the bottom of the test set screen.



Step II. Select the **PRINT SCREEN** button located within the Report Setup Window.



The file is automatically stored on your C drive as a BITMAP image. Find your file using the parameters **C:\NIC\GUI_1.3.21remote**. Open the file using Microsoft PAINT or a similar program. You can now print from your PC or save the file for future reference.

NOTE: You can also print the screen while using RAM, by using the keys on your PC. First press **Ctrl** (lower left hand side), and while holding it down, press **PrtSc** (Print Screen function, usually on upper right side of keyboard)