

# Application Note

Document Number APL-00118

Updated 12/09/01 Rev-A

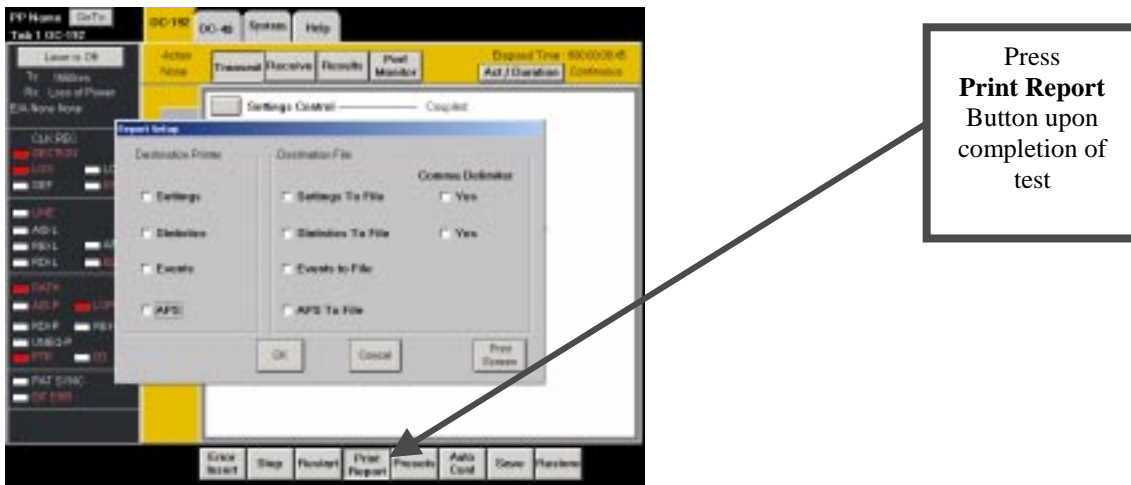


## Printing and saving test results on a PC via RAM for the NIC10G & 2.5G.

### Purpose/Description

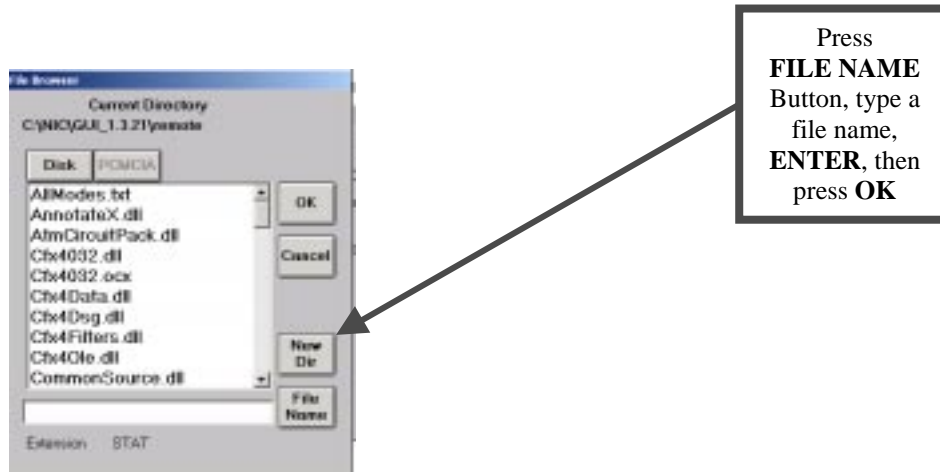
The Purpose of this procedure is to provide instructions on how to save test results on the NIC10g as a file, and subsequently print, save, and view results on a PC via. It is assumed the user has access to a PC, is using Remote Access Manager (RAM) software, and will connect via the Ethernet port. For directions on using RAM with a NIC10g, see application note visit [www.lightwave.com](http://www.lightwave.com), Service/Support, Software Upgrades, Remote Control Software.

Step I. After completion of the test, press the **Print Report** button, located at the bottom of the test set screen.



- 1) Step II. The Report Setup menu appears. Select a report style within the box titled Destination File:
  - a) Selecting **Settings to File** will provide the test set-up values for both the Transmit and Receive Functions.
  - b) Selecting **Statistics to File** provides the results for Scan, Errors, Alarms and Pointer values, and includes a start time, date, and duration of the test.
  - c) Selecting **Events to File** provides a detailed summary of events, the number of events, and includes the date and start time of the test.
  - d) If **APS to File** is selected, results of the K1 and K2 byte sequences received by the unit are printed.

Step III. Select **FILE NAME** and use the keypad to name your results file. Spaces are not permitted. After exiting the keypad, select OK. You may also designate a sub-directory.



Step IV. A Print POP-UP window should appear if you are networked to a printer. If you wish, you can choose to print at this time. The file is automatically stored on your C drive. Find your file using the parameters **C:\NIC\GUI\_1.3.21\remote**. Open the file using WORDPAD and if desired, save the file as a text file of your choice.

Note: **.SET** is the extension for a SETTINGS report.  
**.STAT** is the extension for a STATISTICS report  
**.EVT** is the extension for an EVENTS report.  
**.APS** is the extension for a APS report.