

Application Note

Document Number APL-00105

Updated 06/18/01 Rev-A



How to measure SONET APS times with the ASA312

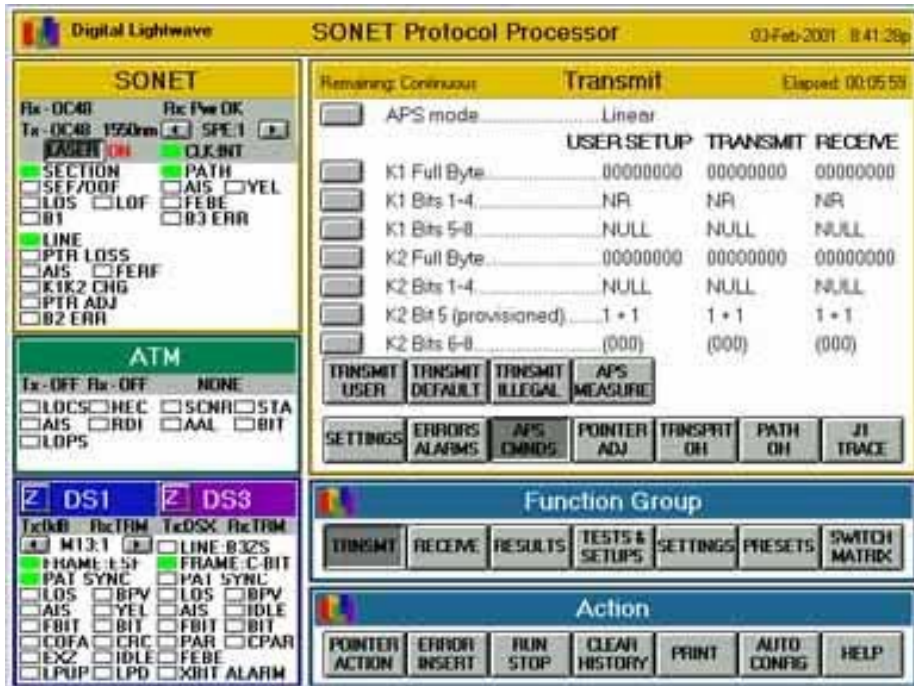
The ASA312 is capable of measuring SONET Automatic Protection Switch (APS) times at the OC48 level from a passive monitoring position. This means that while the ASA312 will measure the actual switch time at the SONET level, the APS itself will need to be initiated by either the SONET switch, or another piece of test equipment.

Since the ASA312 will then be in a "passive" monitoring mode, you will not be able to use your ASA312 for any other testing while using it to measure the SONET APS time.

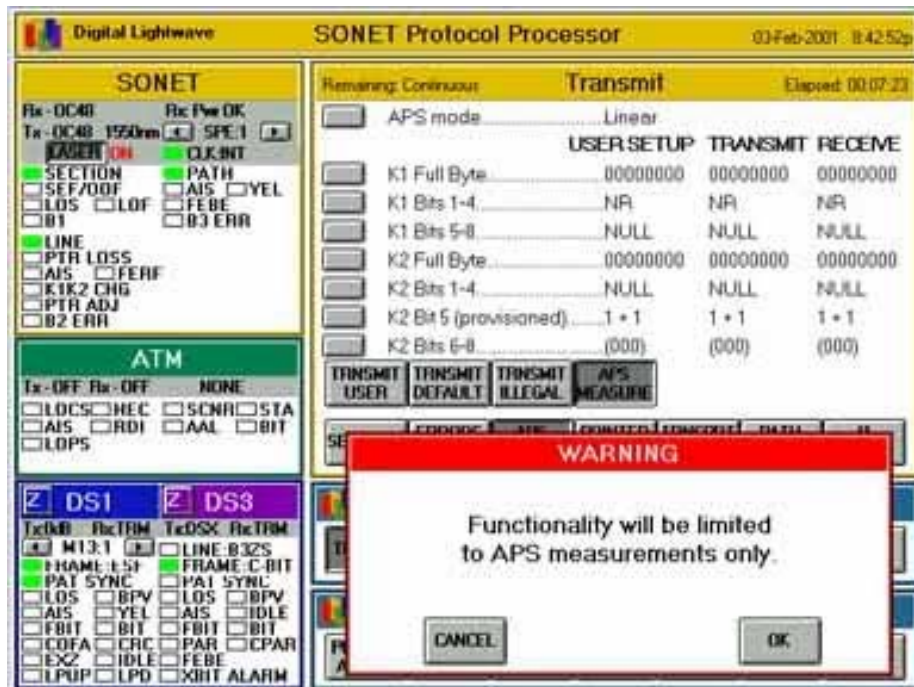
To use your ASA312 to measure SONET APS times, simply perform the **following steps:**

(On next page)

- Using the SONET test window, press the TRANSMIT button from the Functions Group, followed by the APS CMDS button within the SONET test window.

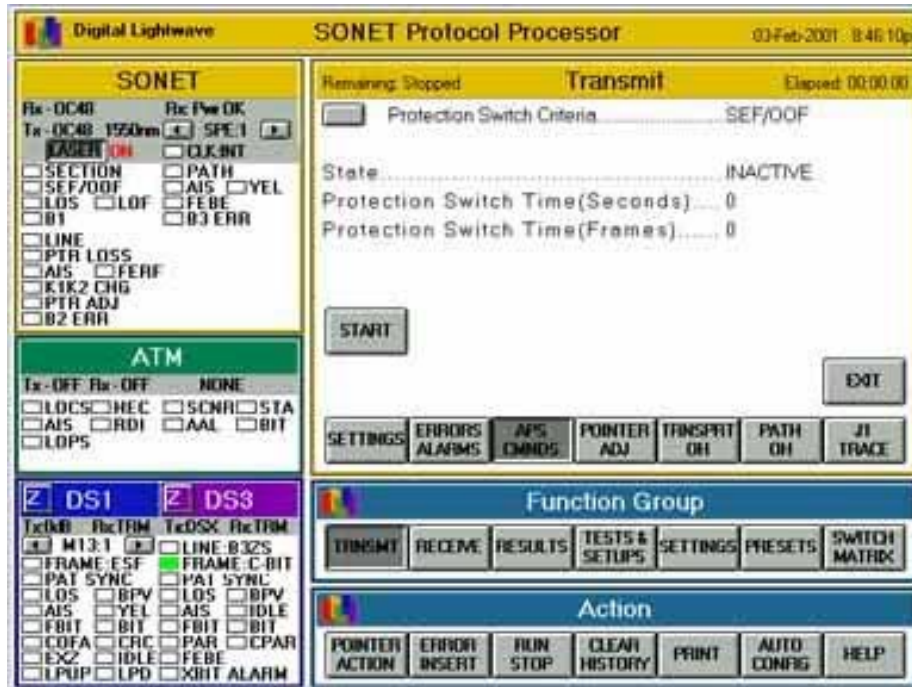


- Next select the APS MEASURE button from with the APS CMDS window. You will then be advised that funtions of the ASA312 will be limited to APS measurements only. Press OK to continue measuring APS.



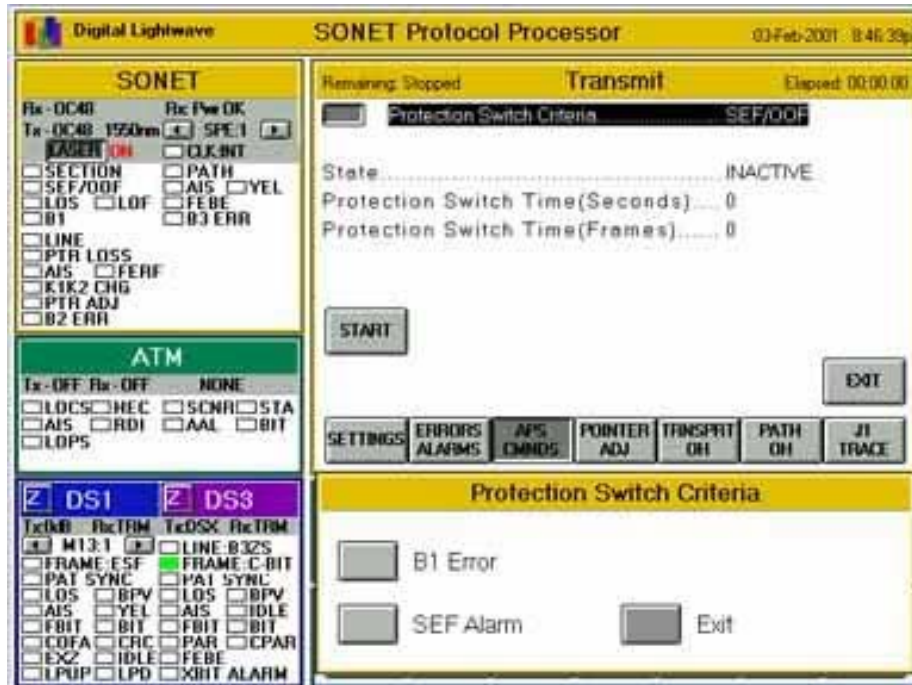
3)

You'll then be brought to the APS measurement window, where you first need to select the Protection Switch Criteria you wish to use.



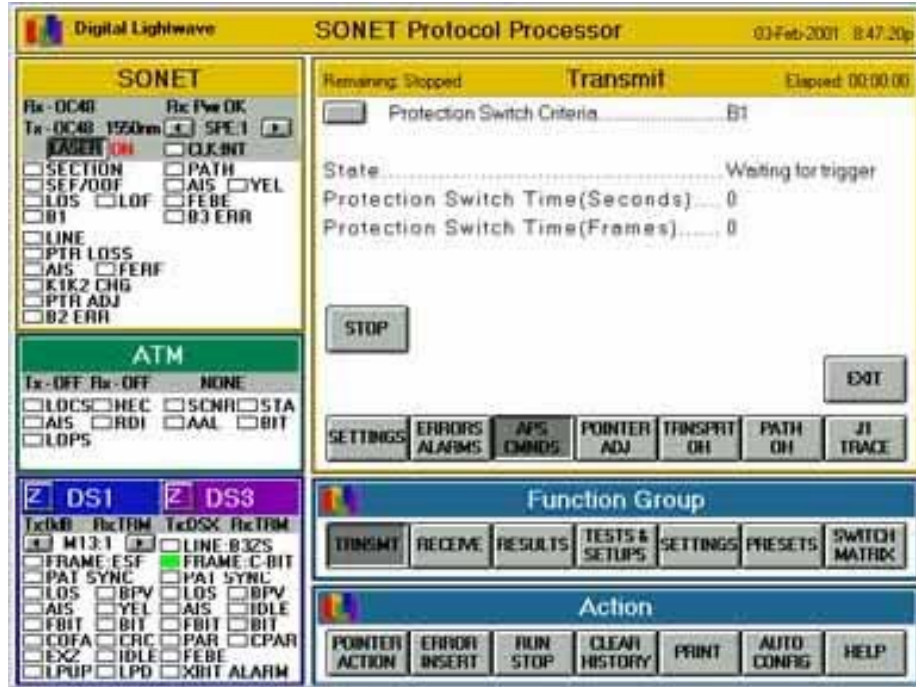
4)

Select either B1 or SEF as your APS measurement criteria.



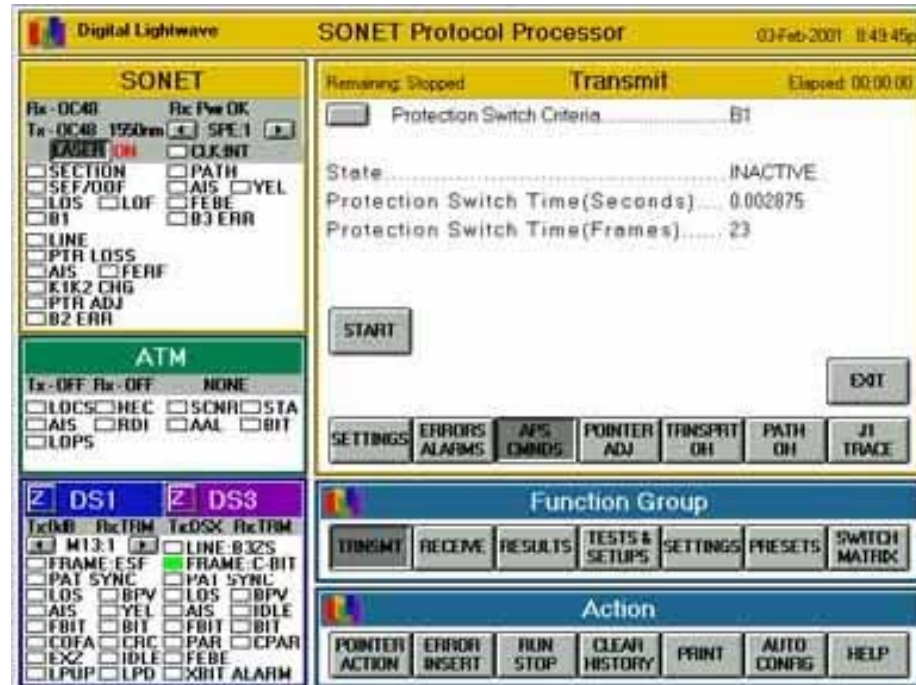
5)

Once you've made your selection, press the START button and your ASA312 will be ready to measure the anticipated Automatic Protection Switch (APS)!



6)

At this point, you need to initiate the APS, and observe the time measured by your ASA312, noting both the time and frames needed to reestablish a valid circuit.



7)

If you'd like to time another APS, simply press the START button again, otherwise press the EXIT button to return your ASA312 to normal operation.

