

Application Note

Document Number: APL-00167

Updated 01/18/05 Rev-A



Wander Client™

The Digital Lightwave® Wander Client is a PC software application that works in conjunction with the Jitter/Wander circuit pack on a NIC® unit to provide synchronization analysis by using data, graphs, and menu commands. The file storage capability allows you to open saved files and analyze their data, and apply standards and masks long after the live measurements have been uploaded.

This document provides information on installing and launching Wander Client, and opening saved measurement files.

Installing and Launching Wander Client

The Wander Client executable file is stored in the GalaxyNIC folder on the PC when the RemoteNIC™ application is installed. There are two ways to launch Wander Client:

- From a NIC unit equipped with a Jitter circuit pack and licensed for Wander Client
- From the GalaxyNIC directory

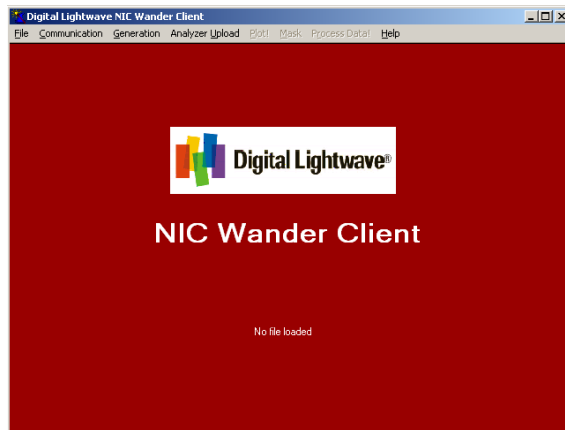
To open Wander Client from a NIC unit:

1. From your PC, open the **RemoteNIC** application and connect to the NIC unit.



The NIC unit must be equipped with a Jitter circuit pack and licensed for Wander Client.

2. From the **Jitter TX** or **Jitter RX** tab, select **Start Wander GUI**. The Wander Client screen appears.



To open Wander Client from the GalaxyNIC directory:

1. From your PC, open **Windows Explorer** and locate the Remote Control Application directory. For example, C:\Program Files\GalaxyNIC.
2. Expand the **GalaxyNIC** directory and choose the **Compat40001<xxxx>** folder.
3. Select the **WanderClient.exe** file. The Wander Client screen appears.



For easy access, you can place a shortcut to Wander Client on your desktop. It is important to remember that when the Remote NIC software is upgraded the Wander Client software is also upgraded, making it desirable to delete the old shortcut and add the new one.

Opening Saved Measurement Files

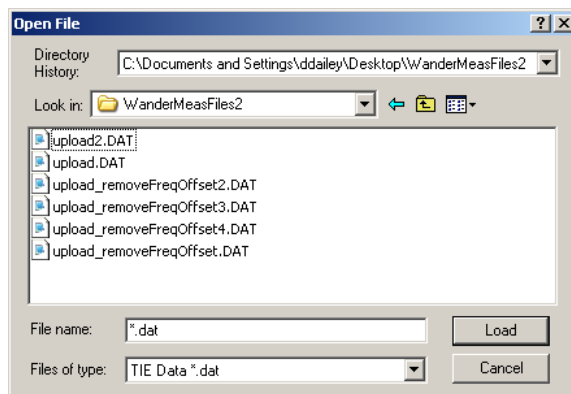
The Open menu command allows you to open saved TIE, MTIE, TDEV, Drift, and Offset files. Once a file is opened you can manipulate a plot's data in several ways using various menu command options.

The following list describes the file types and their extensions:

- .dat – TIE data file
- .mti – MTIE file
- .tdv – TDEV file
- .dft – Drift file
- .off – Offset file

To open saved measurement files:

1. Open the Wander Client application as described in the previous section.
2. From the **File** menu, choose **Open**. The Open File dialog box appears showing the default system32 directory folder.
3. Locate the desired file by selecting the **Look in** drop-down arrow and drilling down to the file, or by selecting the **Directory History** list and choosing from recently used locations.



4. Select the **Files of type** arrow to choose a specific file type, which restricts the files that display in the directory folder list.
5. Select the desired file and choose **Load**. The plot appears on the measurement screen.