

Application Note

Document Number AP-00160
Updated 06/25/2004 Rev-A



Printing a Real-Time Test

A real-time test records and generates a report of any events (alarms, errors, or power interruptions) that occur while the unit is monitoring a customer's circuit. The reports, generated in real time, can be sent to an attached printer, a file, or both.

NOTE: Real-time test reporting is only available locally (from the touch-screen) on portable units.

NOTE: The attached printer must support dot matrix printer technology. The Epson Stylus Color 200 is an example of such a printer. The real-time test feature will not work if the printer only supports page printing.

The report contains the following information:

- A user-defined header
- A brief list of product settings
- Test start time and date
- Event activity as it occurs during the test
- A "print alive" message, which can be configured at a specified time to ensure the user that the real-time test is still active
- A statistical report, produced at the conclusion of the test, providing a summary of reported events. If no events occur during the test duration, a completion message, indicating that no problems were found, is printed.

Real-time test settings and accumulated results are not discarded if a power interruption occurs. The results are saved in 15-minute increments. When power is restored to the unit, the real-time test will continue from where it was prior to the power interruption. The power interruption event will appear in the real-time report.

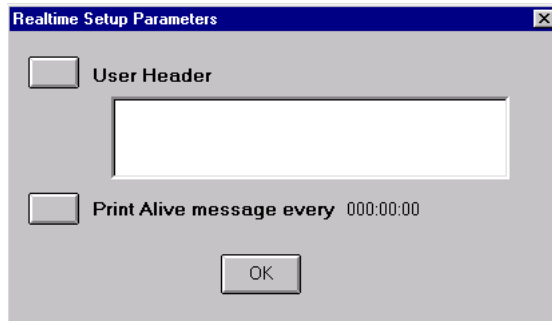
IMPORTANT: Before starting a real-time test, set the Security System Lock. This will prevent remote users from accessing the unit while a test is in progress.

To set up and start a real-time test:

1. Select a protocol processor. For example, **OC-192** or **STM-64**.
2. Select **TEST**.
3. Select **SET 1**. The Duration and Action After Duration functions appear.
4. Select **Action After Duration**. The Select Action after Test window appears.
5. Select **Realtime Actions**. The Select Realtime Actions after Test window appears.
6. Select a real-time test option:
 - Print Events and Repeat Test
 - Record Events and Repeat Test

- Print and Record Events and Repeat Test
- Print Events
- Record Events
- Print and Record Events

The Realtime Setup Parameters window appears.



7. Select **User Header** to enter a user-defined header. The header, which can be up to 64-bytes in length, serves as a brief description of the test. After entering a header using the keypad, select **Enter**.
8. Select **Print Alive message**. The Enter Duration window appears.
9. Set the time parameter, which determines if and when a Print Alive message is generated. A value of 0 disables the messaging function.
10. Select **OK**. The header name and duration setting appear on the Realtime Setup Parameters window.
11. Select **OK**, to close the Realtime Setup Parameters window.
12. Select **Duration**. The Select Duration of Test window appears.
13. Enter how long the test will run.
14. Select **Restart** to start the real-time test. The Elapsed Time counter, located in the top right corner, resets to 0.

NOTE: A screen lock message appears once the test begins to alert others that the unit is involved in a test.