



USB FibreVu™ Probe

Fiber end face inspection to ensure clean and damage-free fiber optic connections

The USB FibreVu™ Probe is a digital video probe for inspection of connector end faces, and detection/analysis of connector defects.

Connected by USB to a PC or Digital Lightwave NIC Platform products, using software included, the USB FibreVu Probe enables a user can see the fiber end face magnified on a PC screen or on a Digital Lightwave NIC's color touchscreen with up to 1500x magnification. Adapter tips are available to support all common connectors used in telecommunications, including LC, SC, ST, FC, MU and more, in both male and female versions to enable testing of both patch cords and bulkhead connections.

By enabling users to identify defects in the connectors, the USB FibreVu probe will ensure standard compliance of the connectors, which will reduce downtime, optimize signal performance, speed deployment, and protect network components from damage.

KEY FEATURES

- Identify defects with high resolution 2D visualization
- 1500x magnification
- Long nose can reach bulkhead connectors in patch panels
- Save and recall results
- Rugged design
- One-year warranty
- USB2.0 interface

PLATFORMS



NIC™



NIC BP™



NIC Plus®

WHY FIBER INSPECTION IS SO IMPORTANT

Most field test failures can be attributed to dirty connectors. Just a single particle in the core of a fiber can cause significant equipment damage, insertion loss, and back reflection, and most connectors are not inspected until the detection of a problem or permanent damage occurs.

Visual fiber inspection is the only way to determine if connectors are truly clean before they are mated.

The USB FibreVu inspection probe provides technicians with fast and reliable methods for proactive detection of connector defects and pass/fail image analysis.

By enabling users to identify defects in the connectors, the USB FibreVu probe will ensure standard compliance of the connectors, which will reduce downtime, optimize signal performance, speed deployment, and protect network components from damage.

GENERAL SPECIFICATIONS

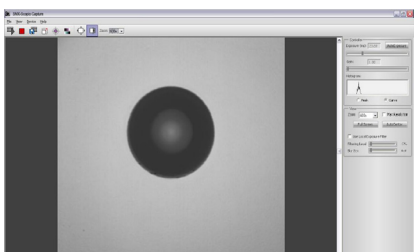
Camera Type	USB2.0 Monochrome
Sensor Type	1280 x 1024 Monochrome 1/2" CMOS
Live Image	800 x 800, 28 fps default 1280 x 1024, 14 fps full resolution
Field of View	0.4 x 0.4 mm; Resolution 1 micron
Optical Zoom	12.5x
Effective Zoom	1500x
Light Source	Blue LED, wave length 470nm
Power Source	USB2.0 Port
Cable	USB2.0
Temperature Range	+5 to +35°C
Dimensions	25W x 55H x 225L mm (0.98" x 2.17" x 8.86")
Weight	330 g (0.73 lbs)
Housing material	Duralumin
Nose material	Stainless steel

SYSTEM REQUIREMENTS

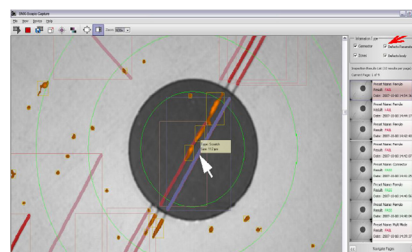
Operating System	Windows XP Professional SP1 or later, Windows Server 2003, Windows Vista, Windows Server 2008, Windows 7
Processor	Pentium IV 2Ghz/Pentium III recommended
RAM	512Mb (1024Mb for Vista/2008/W7) 256 Mb (512Mb for Vista/2008/W7)
Video Card	ATI 9XXX series (or higher) or NVidia GeForce 4x (or higher) Any with 24 bit True Color
Hardware Interface	USB2.0 Host Controller and at least one USB2.0 port for connection

SOFTWARE

The USB FibreVu™ probe is used with the following software packages:



USB FibreVu Capture - for viewing, capturing and storing images of connector end-face



USB FibreVu Inspection* - all FibreVu Capture features plus detection/analysis of connector defects

For more information or a sales quote, visit www.lightwave.com/contact or email dlsales@lightwave.com